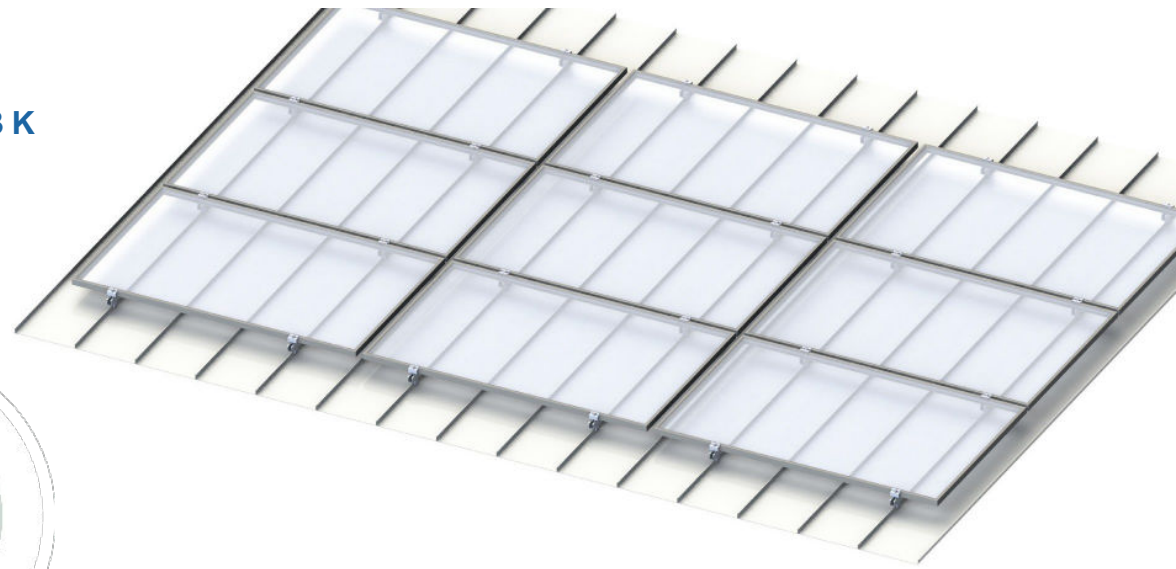


SHEET METAL FOLDING CLAMP 2.1 TBK

Your big advantage

- + metal seam clamps for various seam types such as double and angled standing seam, round bulb seam, Domico, Rib-Roof 465, Klip-Lok
- + quick module mounting due to pre-mounted short rails
- + penetration-free fastening with fixing screw
- + tested and statically approved sheet metal seam clamps
- + module alignment vertical and horizontal



Technical data

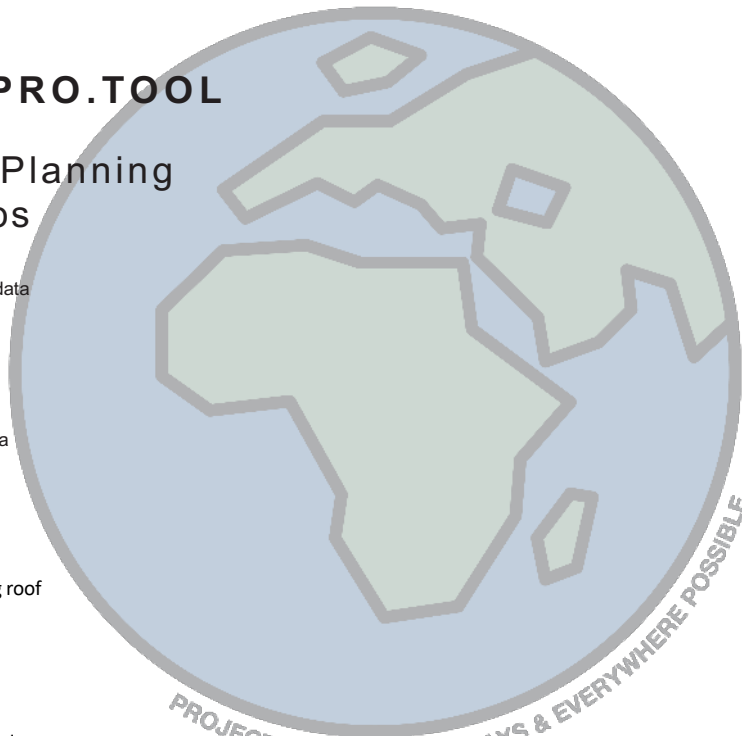
Application:	sheet metal seam roofs, profiled roofs
Roof inclination:	7° - 60°
Connection:	fixation screw
Mounting:	roof parallel
Distance from the roof edge:	roof sections F and G can be occupied according to EN 1991-1-4
Module alignment:	vertical and horizontal
Module dimensions:	length and width as you like
Maximum module field size:	approximately 10 meters in module clamping direction
Maximum snow / wind loads:	are determined project-specifically by the online software MoSo.Pro.Tool
Maximum building height:	25 meter (higher on request)
Roof condition:	The static load-bearing capacity of the roof structure and the building structure must be ensured by the customer.
Materials:	supporting components made of aluminum EN AW 6063 T66, small parts made of stainless steel A2-70; EPDM



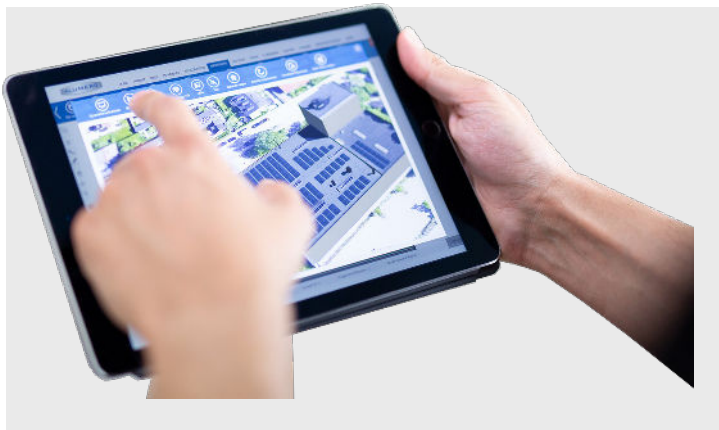
MoSo.PRO.TOOL

Project Planning in 8 steps

- 1 Master data
- 2 Roof data
- 3 Defining roof
- 4 PV-Modules
- 5 Construction
- 6 CAD-plan
- 7 Static
- 8 BOM



We provide our customers with the possibility to create technical, project-related system designs incl. static calculation and project reports by means of the online software MoSo.Pro.Tool.



Systems components

you will find more articles in our product catalog or on our website: www.mounting-solutions.com



Double standing seam clamp
2.1 TBK
 Product number: 802467
 (Double lock standing seam roof)



Angled standing seam clamp
2.1 TBK
 Product number: 802463
 (Angled standing seam roof)



Round fold clamp
2.1 TBK
 Product number : 802461
 (Round-seam profile roof)



Folding clamp
2.1 RD-80 TBK
 Product number: 802470
 (Domico GBS, Zambelli 465)



Folding clamp
2.1 K 15 TBK
 Product number: 802472
 (Domitec-profile roof)



Support profile
 Product number: 80210x



Profile connector
 Product number: 80215x



Cross connector 2.1
 Product number: 802200



Mounting Solutions
 Enabling PV Systems