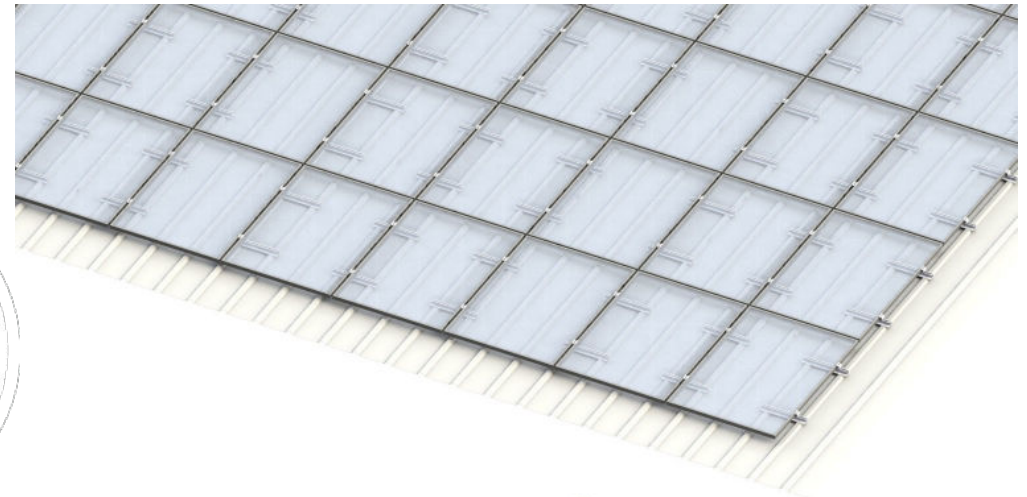


TRAPEZOIDAL SHEET METAL BRIDGE AS 2.1

Your benefits:

- + easy mounting on aluminum and steel trapezoidal sheet coverings
- + tensionless fastening through special drilling screws
- + pre-mounted EPDM for additional sealing btw. roof and metal sheet
- + Module alignment vertical and horizontal
- + Aluminum allows a light and loadable mounting solution



Technical data Trapezoidal sheet metal bridge 2.1

Application:	trapezoidal sheet metal roof
Roof inclination:	5°-35°
Min. sheet thickness:	steel sheet: min. 0.4 mm aluminum sheet: min. 0.5 mm
Trapezoidal sheet raised bead:	minimum width 22 mm (25 mm is recommended)
Distance between crowns:	100 - 333 mm
Connection:	4 pcs. drilling screws (direct connection into the trapezoidal sheet)
Mounting:	roof parallel
Distance to the edge of the roof:	Roof areas F and G can be used according to EN 1991-1-4
Module alignment:	vertical and horizontal
Module dimensions:	Length and width as you like
Maximum module field size:	12 meters in module clamping direction
Maximum snow/wind loads:	are determined project-specifically by online software MoSo.Pro.Tool
Maximum building height:	25 m (higher on request)
Roof condition:	The static load-bearing capacity of the roof structure and the building structure must be ensured by the customer.
Materials:	supporting components made of aluminum EN AW 6063 T66; screws made of stainless steel A2-70; EPDM



MoSo.PRO.TOOL

Project Planning in 8 steps

1

Master data

2

Roof data

3

Defining roof

4

PV-Modules

5

Construction

We provide our customers with the possibility to create technical, project-related system designs incl. static calculation and project reports by means of the online software **MoSo.Pro.Tool**.

6

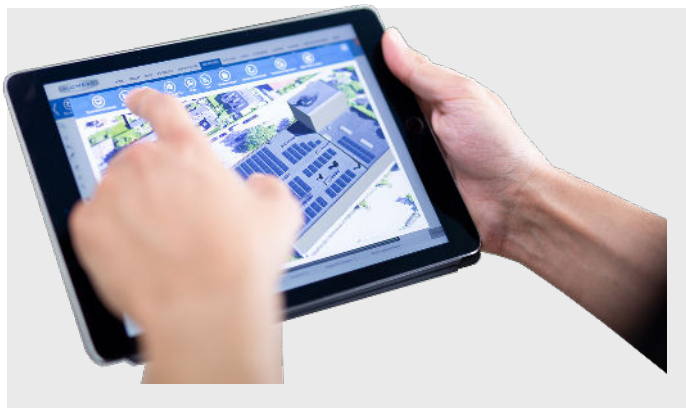
CAD-plan

7

Static

8

BOM



System components

you will find more articles in our product catalog or on our website: www.mounting-solutions.com



Trapezoidal sheet bridge 2.1

L = 400

Product number:

802440

Distance between crowns:

100-333 mm



Trapezoidal sheet bridge 2.1

L = 250

Product number:

802414

Distance between crowns:

100-207 mm



**Mounting
Solutions**

Enabling PV Systems