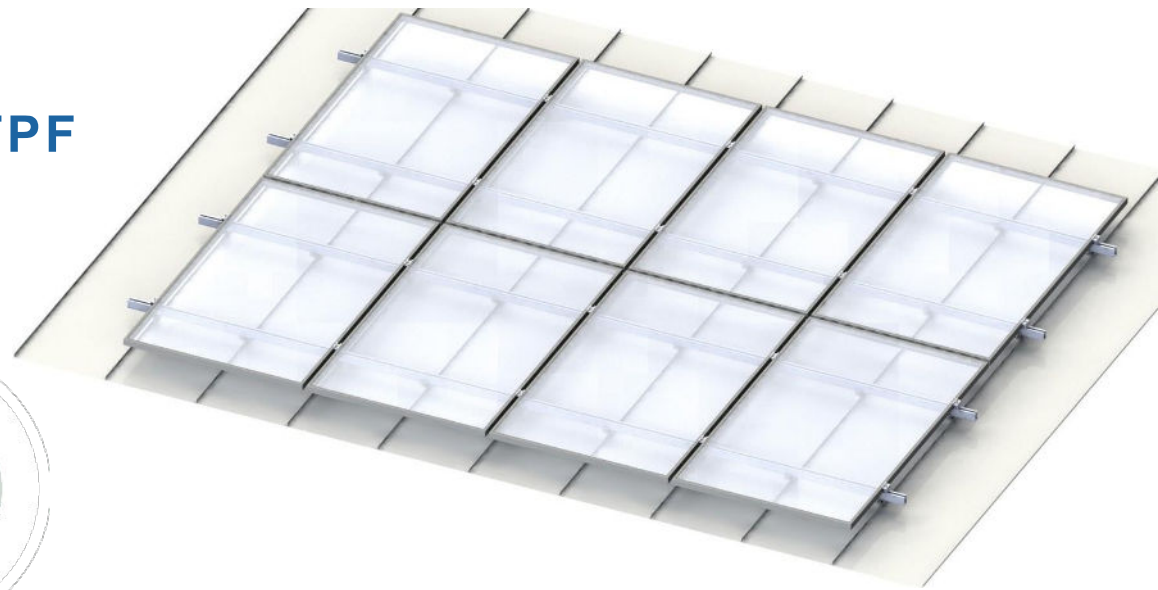


SHEET METAL FOLD CLAMP 2.1 TPF

Your benefits:

- + metal seam clamps for various seam types such as double or angled standing seam, round seam, Domico, Rib-Roof 465, Klip-Lok
- + simple beam profile mounting due to pre-assembled quick-mounting adapter
- + penetration-free fastening with fixing screw
- + tested and statically approved sheet metal seam clamps
- + module alignment vertical and horizontal



Technical data Sheet Metal Fold Clamp 2. TPF

Application:	sheet metal seam roofs, profiled roofs
Roof inclination:	7° - 60°
Connection:	Fixing screw
Mounting:	parallel to the roof
Distance from to roof edge:	roof areas F and G can be occupied according to EN 1991-1-4
Module orientation:	vertical or horizontal
Module dimensions:	length and width as you like
Maximum Module field size:	approx. 3 m in rail direction (depending on fold type, max. possible rail length on request)
Maximum snow/wind loads:	are determined project-specifically by the online software MoSo.Pro.Tool.
Maximum building height:	25 meters (higher upon request)
Roof condition:	The static load-bearing capacity of the roof structure and the building structure must be ensured by the customer.
Materials :	load-bearing components made of aluminum EN AW 6063 T66; stainless steel V2A; small parts made of stainless steel A2-70; EPDM



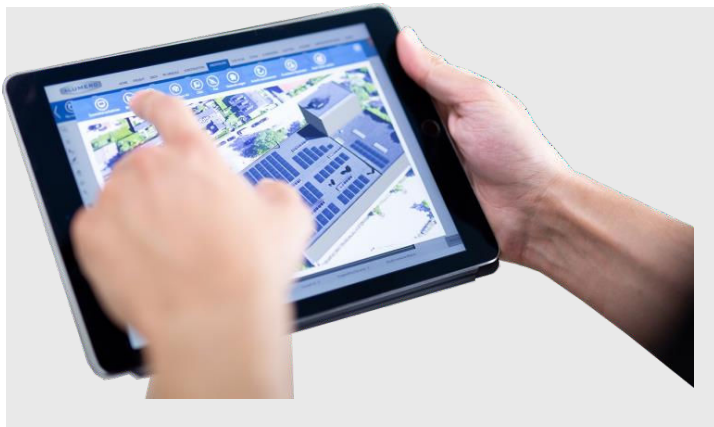
MoSo.PRO.TOOL

Project Planning in 8 steps

- 1 Master data
- 2 Roof data
- 3 Defining roof
- 4 PV-Modules
- 5 Construction
- 6 CAD-plan
- 7 Static
- 8 BOM



We provide our customers the opportunity to create technical, project-related system designs including static calculations and project reports using the online software **MoSo.Pro.Tool**.



System components

you will find more articles in our product catalogue or on our website: www.mounting-solutions.com



Double standing seam clamp
2.1 TPF
Product number:
802466
(Standing seam roof)



Angled standing seam clamp
2.1 TPF
Product number:
802462
(Angle standing seam roof)



Round seam clamp
2.1 TPF
Product number:
802460
(Round seam profile roof)



Folding clamp
2.1 RD-80 TPF
Product number:
802469
(Domico GBS, Zambelli 465)



Folding clamp
2.1 K 15TPF
Product number:
802471
(Domitec profile roof)



Support profile
Product number:
80210x



Profile connector
Product number:
80215x



Cross connector 2.1
Product number:
802200



Mounting Solutions
Enabling PV Systems