



AS 2.1
PITCHED ROOF SYSTEM



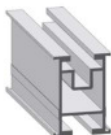
profiles

artikel-nr: 17895
product-nr: 802100-315

Mounting profile 45
L=3.150 (-0/+10) mm
Outside dimensions: 32x45x6200 mm
1 x Mounting channel for threaded plate M8
1 x Mounting channel for hammer head screw M8 or M10

drawing number: 802100-315 A
surface: mill finish

material: EN AW 6063 / T66
weight: 0,816 kg/mtr
packaging: 504 mtr. (160 bars)
Wx, Wy: 3007 mm³, 1972 mm³

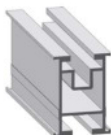


artikel-nr: 17184
product-nr: 802100-42

Mounting profile 45
L=4.200 (-0/+10) mm
Outside dimensions: 32 x 45mm
1x Mounting channel for threaded plate M8
1x Mounting channel for hammer head screw M8 or M10

drawing number: 802100-42 A
surface: mill finish

material: EN AW 6063 / T66
weight: 0,816 kg/mtr
packaging: 672 mtr. (160 bars)
Wx, Wy: 3007 mm³, 1972 mm³



artikel-nr: 16757
product-nr: 802100-62

Mounting profile 45
L=6.200 (-0/+10)mm
Outside dimensions: 32 x 45mm
1x Mounting channel for threaded plate M8
1x Mounting channel for hammer head screw M8 or M10

drawing number: 802100-62 A
surface: mill finish

material: EN AW 6063 / T66
weight: 0,816 kg/mtr
packaging: 992 mtr. (160 bars)
Wx, Wy: 3007 mm³, 1972 mm³





profiles

artikel-nr: 16413
product-nr: 802100Z

Mounting profile 45 cut
L=variabel (-0/+10) mm
Outside dimensions: 32x45mm
1x Mounting channel for threaded plate M8
1 x Mounting channel for hammer head screw M8 or M10

drawing number: 802100Z A
surface: mill finish

material: EN AW 6063 / T66
weight: 0,816 kg/mtr
packaging: 3007 mm³, 1972 mm³
Wx, Wy:



artikel-nr: 16759
product-nr: 802102-62

Mounting profile 65
L=6.200 (-0/+10) mm
Outside dimensions: 40 x 65 mm
1x Mounting channel for threaded plate M8
1x Mounting channel for hammer head screw M8 or M10

drawing number: 802102-62 A
surface: mill finish

material: EN AW 6063 / T66
weight: 1,216 kg/mtr
packaging: 465 mtr. (75 bars)
7795 mm³, 3922 mm³
Wx, Wy:



artikel-nr: 16760
product-nr: 802103-62

Mounting profile 95
L=6.200 (-0/+10) mm
Outside dimensions: 62 x 95 mm
1x Mounting channel for threaded plate M8
1x Mounting channel for hammer head screw M8 or M10

drawing number: 802103-62 A
surface: mill finish

material: EN AW 6063 / T66
weight: 1,655 kg/mtr
packaging: 223,2 mtr. (36 bars)
16700 mm³, 9830 mm³
Wx, Wy:





profiles

artikel-nr: 17112
product-nr: 802104-62

Mounting profile 80
L=6.200 (-0/+10) mm
Outside dimensions: 50 x 80 mm
1x Mounting channel for threaded plate M8
1x Mounting channel for hammer head screw M8 or M10

drawing number: 802104-62 A
surface: mill finish

material: EN AW 6063 / T66
weight: 1,437 kg/mtr
packaging: 341 mtr. (55 bars)
Wx, Wy: 11797 mm³, 5943 mm³

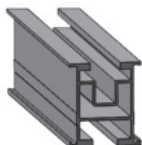


artikel-nr: 19687
product-nr: 802105-315

Mounting profile 37
L=3.150 (-0/+10) mm
Outside dimensions: 25,3 x 37 mm
1x Mounting channel for threaded plate M8
1x Mounting channel for hammer head screw M8 or M10

drawing number: 802105-315 A
surface: mill finish

material: EN AW 6063 / T66
weight: 0,664 kg/mtr
packaging: 567 mtr. (180 bars)
Wx, Wy: 2023 mm³, 1544 mm³

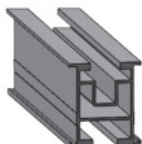


artikel-nr: 19686
product-nr: 802105-42

Mounting profile 37
L=4.200 (-0/+10) mm
Outside dimensions: 25,3 x 37 mm
1x Mounting channel for threaded plate M8
1x Mounting channel for hammer head screw M8 or M10

drawing number: 802105-42 A
surface: mill finish

material: EN AW 6063 / T66
weight: 0,664 kg/mtr
packaging: 756 mtr. (180 bars)
Wx, Wy: 2023 mm³, 1544 mm³





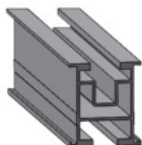
profiles

artikel-nr: 17699
product-nr: 802105-62

Mounting profile 37
L=6.200 (-0/+10) mm
Outside dimensions: 25,3 x 37 mm
1x Mounting channel for threaded plate M8
1x Mounting channel for hammer head screw M8 or M10

drawing number: 802105-62 A
surface: mill finish

material: EN AW 6063 / T66
weight: 0,664 kg/mtr
packaging: 1.116 mtr. (180 bars)
Wx, Wy: 2023 mm³, 1544 mm³

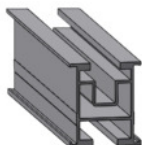


artikel-nr: 20358
product-nr: 802105Z

Mounting profile 37 cutting
L=variabel (-0/+10) mm
Outside dimensions: 25,3 x 37 mm
1x Mounting channel for threaded plate M8
1x Mounting channel for hammer head screw M8 or M10

drawing number: 802105Z A
surface: mill finish

material: EN AW 6063 / T66
weight: 0,664 kg/mtr
packaging:



artikel-nr: 16761
product-nr: 802190-62

Mounting profile 45 black
L=6.200 (-0/+10) mm
Surface black anodized
Outside dimensions: 32 x 45 mm
1x Mounting channel for threaded plate M8
1x Mounting channel for hammer head screw M8 or M10

drawing number: 802190-62 A
surface: anodized in E6/C35

material: EN AW 6063 / T66
weight: 0,816 kg/mtr
packaging: 992 mtr. (160 bars)
Wx, Wy: 3007 mm³, 1972 mm³





profiles

artikel-nr: 20013
product-nr: 802195-62

Mounting profile 37 black
L=6.200 (-0/+10) mm
Surface black anodized
Outside dimensions: 25,3 x 37 mm
1x mounting channel for threaded plate M8
1x mounting channel for hammer head screw M8 or M10

drawing number: 802195-62 A
surface: anodized in E6/C35

material: EN AW 6063 / T66
weight: 0,664 kg/mtr
packaging: 1.116 mtr. (180 bars)



connection parts

artikel-nr: 16416
product-nr: 802150

Profile connector 45
L=270mm
for Mounting profile 45
Outside dimensions: 22,3 x 22 mm

drawing number: 802150 A
surface: mill finish

material: EN AW 6063 / T66
weight: 0,075 kg/Stk
packaging: 10 pcs. per box / 3.360 pcs. per pallet



artikel-nr: 20504
product-nr: 802150S

Profile connector 45 S
L=270mm
for Mounting profile 45 incl. 4 self drilling screws SW8 6,0 x 25 mm
Outside dimensions: 22,3 x 22 mm

drawing number: 802150S A
surface: mill finish

material: EN AW 6063 / T66; A2-70
weight: 0,075 kg/Stk
packaging: 10 pcs. per box / 3.360 pcs. per pallet





connection parts

artikel-nr: 16441
product-nr: 802152

Profile connector 65
L=400mm
for Mounting profile 65
Outside dimensions: 30 x 3 x 58,3 mm

drawing number: 802152 B
surface: mill finish

material: EN AW 6063 / T66
weight: 0,220 kg/Stk
packaging: 10 pcs. per box / 1.000 pcs. per pallet



artikel-nr: 17418
product-nr: 802152S

Profile connector 65 S
L=400mm
for Mounting profile 65 incl. 4 self drilling screws SW8 6,0 x 25 mm
Outside dimensions: 30 x 3 x 8,3 mm

drawing number: 802152S B
surface: mill finish

material: EN AW 6063 / T66; A2-70
weight: 0,248 kg/Stk
packaging: 10 pcs. per box / 1.000 pcs. per pallet

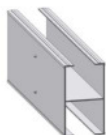


artikel-nr: 16446
product-nr: 802153

Profile connector 95
L=400mm
for Mounting profile 95
Outside dimension: 51,1 x 91,3 mm

drawing number: 802153 B
surface: mill finish

material: EN AW 6063 / T66
weight: 0,453 kg/Stk
packaging: 10 pcs. per box / 240 pcs. per pallet

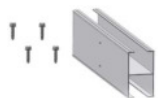


artikel-nr: 17419
product-nr: 802153S

Profile connector 95 S
L=400mm
for Mounting profile 95 incl 4 pcs. self drilling screws SW8 5,5 x 25
Outside dimension: 51,1 x 91,3 mm

drawing number: 802153S B
surface: mill finish

material: EN AW 6063 / T66; A2-70
weight: 0,481 kg/Stk
packaging: 10 pcs. per box / 240 pcs. per pallet





connection parts

artikel-nr: 17115
product-nr: 802154

Profile connector 80
L=400mm
for Mounting profile 80
Outside dimension: 39,1 x 76,3 mm

drawing number: 802154 A
surface: mill finish

material: EN AW 6063 / T66
weight: 0,345 kg/Stk
packaging: 10 pcs. per box / 240 pcs. per pallet

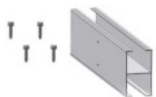


artikel-nr: 18061
product-nr: 802154S

Profile connector 80 S
L=400mm
for Mounting profile 80 incl. 4 self drilling screws SW10 5,5 x 25 mm
Outside dimensions: 30 x 58,3 mm

drawing number: 802154S A
surface: mill finish

material: EN AW 6063 / T66; A2-70
weight: 0,345 kg/Stk
packaging: 10 pcs. per box / 240 pcs. per pallet

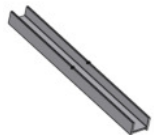


artikel-nr: 23311
product-nr: 802155-B

Profile connector 37
L=200mm
for Mounting profile 37
Outside dimensions: 14,4 x 21,4 mm

drawing number: 802155-B B
surface: mill finish

material: EN AW 6063 / T66
weight: 0,051 kg/Stk
packaging: 10 pcs. per box / 600 pcs. per pallet



artikel-nr: 16417
product-nr: 802200

Cross connector 2.1
for Mounting profile 37, 45 and 65
inkl. Socket screw M8x30 with square nut
inkl. Socket screw M8x16 with threaded plate 28x15 and Tuflock

drawing number: 802200 A
surface: mill finish

material: EN AW 6063 / T66; A2-70
weight: 0,092 kg/Stk
packaging: 20 pcs. per box / 2.800 pcs. per pallet



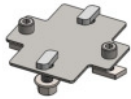


connection parts

artikel-nr: 23903
product-nr: 802203

Cross connector TP95 2.1
for mounting profile 95; comes pre-mounted with screws and nuts

drawing number: 802203 B
material: Stainless steel 1.4016; A2-70
weight: 0,155 kg/Stk
packaging: 25 pcs. per carton



clamps

artikel-nr: 23068
product-nr: 802301-28-37V

Middle clamp for fast mounting 28-37
L= 50 mm
Incl. Opening-function
for Frame height 28-37mm
for Mounting profiles with threaded plate channel M8

drawing number: 802301-28-37V
surface: mill finished

material: EN AW 6063 / T66; A2-70
weight: 0,052 kg/Stk
packaging: 50 pcs. per box / 4.950 pcs. per pallet



artikel-nr: 23068
product-nr: 802301-28-37V P1

Middle clamp for fast mounting 28-37 with Pin
L= 50 mm
Incl. Opening-function
for Frame height 28-37mm
for Mounting profiles with threaded plate channel M8

drawing number: 802301-28-37V P1
surface: mill finished

material: EN AW 6063 / T66; A2-70
weight: 0,053 kg/Stk
packaging: 50 pcs. per box / 4.950 pcs. per pallet



artikel-nr: 23070
product-nr: 802301-38-47V

Middle clamp for fast mounting 38-47
L= 50 mm
Incl. Opening-function
for Frame height 38-47mm
for Mounting profiles with threaded plate channel M8

drawing number: 802301-38-47V
surface: mill finished

material: EN AW 6063 / T66; A2-70
weight: 0,054 kg/Stk
packaging: 50 pcs. per box / 4.950 pcs. per pallet





clamps

artikel-nr: 23071
product-nr: 802301-38-47V P1

Middle clamp for fast mounting 38-47 with Pin
L= 50 mm
Incl. Opening-function
for Frame height 38-47mm
for Mounting profiles with threaded plate channel M8

drawing number: 802301-38-47V P1
surface: mill finished

material: EN AW 6063 / T66; A2-70
weight: 0,055 kg/Stk
packaging: 50 pcs. per box / 4.950 pcs. per pallet



artikel-nr: 23072
product-nr: 802301-48-50V

Middle clamp for fast mounting 48-50
L= 50 mm
Incl. Opening-function
for Frame height 48-50mm
for Mounting profiles with threaded plate channel M8

drawing number: 802301-48-50V
surface: mill finished

material: EN AW 6063 / T66; A2-70
weight: 0,058 kg/Stk
packaging: 50 pcs. per box / 4.950 pcs. per pallet



artikel-nr: 23073
product-nr: 802301-48-50V P1

Middle clamp for fast mounting 48-50 with Pin
L= 50 mm
Incl. Opening-function
for Frame height 48-50mm
for Mounting profiles with threaded plate channel M8

drawing number: 802301-48-50V P1
surface: mill finished

material: EN AW 6063 / T66; A2-70
weight: 0,059 kg/Stk
packaging: 50 pcs. per box / 4.950 pcs. per pallet





clamps

artikel-nr: 23061
product-nr: 802301C 30-45

Middle clamp Click 2.1 30-45
L= 50 mm
Incl. Opening-function and clamping element
For Frame sizes 30-45 mm and mounting profiles with threaded plate M8 channel

drawing number: 802301C 30-45
surface: mill finish

material: EN AW 6063 / T66; A2-70
weight: 0,061 kg/Stk
packaging: 50 pcs. per box / 4.950 pcs. per pallet



artikel-nr: 23064
product-nr: 802301C 33-50

Middle clamp Click 2.1 33-50
L= 50 mm
Incl. Opening-function and clamping element
For Frame sizes 33-50 mm and mounting profiles with threaded plate M8 channel

drawing number: 802301C 33-50
surface: mill finished

material: EN AW 6063 / T66; A2-70
weight: 0,063 kg/Stk
packaging: 50 pcs. per box / 4.950 pcs. per pallet



artikel-nr: 23055
product-nr: 802301C P1 30-45

Middle clamp Click 2.1 30-45 with Pin
L= 50 mm
Incl. Opening-function and clamping element
For Frame sizes 30-45 mm and mounting profiles with threaded plate M8 channel

drawing number: 802301C P1 30-45
surface: mill finished

material: EN AW 6063 / T66; A2-70
weight: 0,061 kg/Stk
packaging: 50 pcs. per box / 4.950 pcs. per pallet



artikel-nr: 23065
product-nr: 802301C P1 33-50

Middle clamp Click 2.1 33-50 with Pin
L= 50 mm
Incl. Opening-function and clamping element
For Frame sizes 33-50 mm and mounting profiles with threaded plate M8 channel

drawing number: 802301C P1 33-50
surface: mill finished

material: EN AW 6063 / T66; A2-70
weight: 0,063 kg/Stk
packaging: 50 pcs. per box / 4.950 pcs. per pallet





clamps

artikel-nr: 17753
product-nr: 802304-30V

End clamp for fast mounting 30
L=50mm
Incl. Opening-function
for Frame height 30 mm
for Mounting profiles with threaded plate channel M8

drawing number: 802304-30V A
surface: mill finish

material: EN AW 6063 / T66; A2-70
weight: 0,046 kg/Stk
packaging: 20 pcs. per box / 7.000 pcs. per pallet



artikel-nr: 21352
product-nr: 802304-30V P1

End clamp 30 with pin
L=50 mm
Incl. Opening-function
for Frame height 30mm
for Mounting profiles with threaded plate channel M8

drawing number: 802304-30V P1
surface: mill finish

material: EN AW / 6063 T66; A2-70
weight: 0,047 kg/Stk
packaging: 20 pcs. per box / 7.000 pcs. per pallet



artikel-nr: 16481
product-nr: 802304-31V

End clamp for fast mounting 31
L=50mm
Incl. Opening-function
for Frame height 31 mm
for Mounting profiles with threaded plate channel M8

drawing number: 802304-31V B
surface: mill finish

material: EN AW 6063 / T66; A2-70
weight: 0,046 kg/Stk
packaging: 20 pcs. per box / 7.000 pcs. per pallet



artikel-nr: 21353
product-nr: 802304-31V P1

End clamp 31 with pin
L=50 mm
Incl. Opening-function
for Frame height 31mm
for Mounting profiles with threaded plate channel M8

drawing number: 802304-31V P1
surface: mill finish

material: EN AW / 6063 T66 ; A2-70
weight: 0,047 kg/Stk
packaging: 20 pcs. per box / 7.000 pcs. per pallet





clamps

artikel-nr: 20263
product-nr: 802304-32V

End clamp for fast mounting 32
L=50mm
Incl. Opening-function
for Frame height 32 mm
for Mounting profiles with threaded plate channel M8

drawing number: 802304-32V
surface: mill finish

material: EN AW 6063 / T66; A2-70
weight: 0,047 kg/Stk
packaging: 20 pcs. per box / 7.000 pcs. per pallet



artikel-nr: 21548
product-nr: 802304-32V P1

End clamp 32 with Pin
L=50mm
Incl. Opening-function
for Frame height 32 mm
for Mounting profiles with threaded plate channel M8

drawing number: 802304-32V P1
surface: mill finish

material: EN AW 6063 / T66; A2-70
weight: 0,048 kg/Stk
packaging: 20 pcs. per box / 7.000 pcs. per pallet



artikel-nr: 18079
product-nr: 802304-33V

End clamp for fast mounting 33
L= 50mm
Incl. Opening-function
for Frame height 33 mm
for Mounting profiles with threaded plate channel M8

drawing number: 802304-33V A
surface: mill finish

material: EN AW 6063 / T66; A2-70
weight: 0,048 kg/Stk
packaging: 20 pcs. per box / 7.000 pcs. per pallet



artikel-nr: 21354
product-nr: 802304-33V P1

End clamp 33 with pin
L= 50 mm
Incl. Opening-function
for Frame height 33 mm
for Mounting profiles with threaded plate channel M8

drawing number: 802304-33V P1
surface: mill finish

material: EN AW 6063 T66; A2-70
weight: 0,048 kg/Stk
packaging: 20 pcs. per box / 7.000 pcs. per pallet





Klemmen

Artikel-Nr: 21355
Produkt-Nr: 802304-34V P1

Abschlussklemme 34 mit Pin
L=50 mm
inkl. Öffnungs-Funktion
Für Modulrahmenhöhe 34 mm
Für Trägerprofil mit Gewindeplattenkanal M8

Zeichnungsnummer: 802304-34V P1
Oberfläche: pressblank

Material: EN AW 6063 / T66; A2-70
Gewicht: 0,048 kg/Stk
Verpackungseinheit: 20 Stk. pro Karton / 7.000 Stk. pro Palette



Artikel-Nr: 15787
Produkt-Nr: 802304-35V

Abschlussklemme 35 vormontiert
L=50 mm
inkl. Öffnungs-Funktion
Für Modulrahmenhöhe 35 mm
Für Trägerprofil mit Gewindeplattenkanal M8

Zeichnungsnummer: 802304-35V B
Oberfläche: pressblank

Material: EN AW 6063 / T66; A2-70
Gewicht: 0,048 kg/Stk
Verpackungseinheit: 20 Stk. pro Karton / 7.000 Stk. pro Palette



Artikel-Nr: 21317
Produkt-Nr: 802304-35V P1

Abschlussklemme 35 mit Pin
L=50 mm
inkl. Öffnungs-Funktion
Für Modulrahmenhöhe 35 mm
Für Trägerprofil mit Gewindeplattenkanal M8

Zeichnungsnummer: 802304-35V P1
Oberfläche: pressblank

Material: EN AW 6063 / T66; A2-70
Gewicht: 0,048 kg/Stk
Verpackungseinheit: 20 Stk. pro Karton / 7.000 Stk. pro Palette



Artikel-Nr: 15789
Produkt-Nr: 802304-36V

Abschlussklemme 36 vormontiert
L=50 mm
inkl. Öffnungs-Funktion
Für Modulrahmenhöhe 36 mm
Für Trägerprofil mit Gewindeplattenkanal M8

Zeichnungsnummer: 802304-36V B
Oberfläche: pressblank

Material: EN AW 6063 / T66; A2-70
Gewicht: 0,049 kg/Stk
Verpackungseinheit: 20 Stk. pro Karton / 7.000 Stk. pro Palette





Klemmen

Artikel-Nr: 21357
Produkt-Nr: 802304-36V P1

Abschlussklemme 36 mit Pin
L=50 mm
inkl. Öffnungs-Funktion
Für Modulrahmenhöhe 36 mm
Für Trägerprofil mit Gewindeplattenkanal M8

Zeichnungsnummer: 802304-36V P1
Oberfläche: pressblank

Material: EN AW 6063 / T66; A2-70
Gewicht: 0,049 kg/Stk
Verpackungseinheit: 20 Stk. pro Karton / 7.000 Stk. pro Palette



Artikel-Nr: 15790
Produkt-Nr: 802304-38V

Abschlussklemme 38 vormontiert
L=50 mm
inkl. Öffnungs-Funktion
Für Modulrahmenhöhe 38 mm
Für Trägerprofil mit Gewindeplattenkanal M8

Zeichnungsnummer: 802304-38V B
Oberfläche: pressblank

Material: EN AW 6063 / T66; A2-70
Gewicht: 0,050 kg/Stk
Verpackungseinheit: 20 Stk. pro Karton / 7.000 Stk. pro Palette



Artikel-Nr: 21358
Produkt-Nr: 802304-38V P1

Abschlussklemme 38 mit Pin
L=50 mm
inkl. Öffnungs-Funktion
Für Modulrahmenhöhe 38 mm
Für Trägerprofil mit Gewindeplattenkanal M8

Zeichnungsnummer: 802304-38V P1
Oberfläche: pressblank

Material: EN AW 6063 / T66; A2-70
Gewicht: 0,050 kg/Stk
Verpackungseinheit: 20 Stk. pro Karton / 7.000 Stk. pro Palette



Artikel-Nr: 15791
Produkt-Nr: 802304-40V

Abschlussklemme 40 vormontiert
L=50 mm
inkl. Öffnungs-Funktion
Für Modulrahmenhöhe 40 mm
Für Trägerprofil mit Gewindeplattenkanal M8

Zeichnungsnummer: 802304-40V B
Oberfläche: pressblank

Material: EN AW 6063 / T66; A2-70
Gewicht: 0,051 kg/Stk
Verpackungseinheit: 20 Stk. pro Karton / 7.000 Stk. pro Palette





clamps

artikel-nr: 15791
product-nr: 802304-40V

End clamp for fast mounting 40
L=50mm
Incl. Opening-function
for Frame height 40 mm
for Mounting profiles with threaded plate channel M8

drawing number: 802304-40V B
surface: mill finish

material: EN AW 6063 / T66; A2-70
weight: 0,051 kg/Stk
packaging: 20 pcs. per box / 7.000 pcs. per pallette



artikel-nr: 21293
product-nr: 802304-40V P1

End clamp 40 with pin
L=50 mm
Incl. Opening-function
for Frame height 40 mm
for Mounting profiles with threaded plate channel M8; Place of Origin; Poland

drawing number: 802304-40V P1
surface: mill finish

material: EN AW 6063 / T66; A2-70
weight: 0,050 kg/Stk
packaging: 20 pcs. per box / 7.000 pcs. per pallette



artikel-nr: 15792
product-nr: 802304-42V

End clamp for fast mounting 42
L=50mm
Incl. Opening-function
for Frame height 42 mm
for Mounting profiles with threaded plate channel M8

drawing number: 802304-42V B
surface: mill finish

material: EN AW 6063 / T66; A2-70
weight: 0,051 kg/Stk
packaging: 20 pcs. per box / 7.000 pcs. per pallette



artikel-nr: 21359
product-nr: 802304-42V P1

End clamp 42 with pin
L=50 mm
Incl. Opening-function
for Frame height 42 mm
for Mounting profiles with threaded plate channel M8

drawing number: 802304-42V P1
surface: mill finish

material: EN AW 6063 / T66; A2-70
weight: 0,051 kg/Stk
packaging: 20 pcs. per box / 7.000 pcs. per pallette





clamps

artikel-nr: 15793
product-nr: 802304-43V

End clamp for fast mounting 43
L=50 mm
Incl. Opening-function
for Frame height 43 mm
for Mounting profiles with threaded plate channel M8

drawing number: 802304-43V B
surface: mill finish

material: EN AW 6063 / T66; A2-70
weight: 0,052 kg/Stk
packaging: 20 pcs. per box / 7.000 pcs. per pallette



artikel-nr: 21360
product-nr: 802304-43V P1

End clamp 43 with pin
L=50 mm
Incl. Opening-function
for Frame height 43 mm
for Mounting profiles with threaded plate channel M8

drawing number: 802304-43V P1
surface: mill finish

material: EN AW 6063 / T66; A2-70
weight: 0,051 kg/Stk
packaging: 20 pcs. per box / 7.000 pcs. per pallette



artikel-nr: 15795
product-nr: 802304-45V

End clamp for fast mounting 45
L=50mm
Incl. Opening-function
for Frame height 45 mm
for Mounting profiles with threaded plate channel M8

drawing number: 802304-45V B
surface: mill finish

material: EN AW 6063 / T66; A2-70
weight: 0,052 kg/Stk
packaging: 20 pcs. per box / 7.000 pcs. per pallette



artikel-nr: 21361
product-nr: 802304-45V P1

End clamp 45 with pin
L=50 mm
Incl. Opening-function
for Frame height 45 mm
for Mounting profiles with threaded plate channel M8

drawing number: 802304-45V P1
surface: mill finish

material: EN AW 6063 / T66; A2-70
weight: 0,052 kg/Stk
packaging: 20 pcs. per box / 7.000 pcs. per pallette





clamps

artikel-nr: 15794
product-nr: 802304-46V

End clamp for fast mounting 46
L=50mm
Incl. Opening-function
for Frame height 46 mm
for Mounting profiles with threaded plate channel M8

drawing number: 802304-46V B
surface: mill finish

material: EN AW 6063 / T66; A2-70
weight: 0,053 kg/Stk
packaging: 20 pcs. per box / 7.000 pcs. per pallette



artikel-nr: 21362
product-nr: 802304-46V P1

End clamp 46 with pin
L=50 mm
Incl. Opening-function
for Frame height 46 mm
for Mounting profiles with threaded plate channel M8; Place of Origin : Poland

drawing number: 802304-46V P1
surface: mill finish

material: EN AW 6063 / T66; A2-70
weight: 0,053 kg/Stk
packaging: 20 pcs. per box / 7.000 pcs. per pallette



artikel-nr: 15797
product-nr: 802304-50V

End clamp for fast mounting 50
L=50mm
Incl. Opening-function
for Frame height 50 mm
for Mounting profiles with threaded plate channel M8

drawing number: 802304-50V B
surface: mill finish

material: EN AW 6063 / T66; A2-70
weight: 0,054 kg/Stk
packaging: 20 pcs. per box / 7.000 pcs. per pallette



artikel-nr: 21363
product-nr: 802304-50V P1

End clamp 50 with pin
L=50 mm
Incl. Opening-function
for Frame height 50 mm
for Mounting profiles with threaded plate channel M8

drawing number: 802304-50V P1
surface: mill finish

material: EN AW 6063 / T66; A2-70
weight: 0,055 kg/Stk
packaging: 20 pcs. per box / 7.000 pcs. per pallette





clamps

artikel-nr: 23074
product-nr: 802391-28-37V

Middle clamp for fast mounting 28-37 black
L= 50 mm
Incl. Opening-function
for Frame height 28-37mm
for Mounting profiles with threaded plate channel M8

drawing number: 802391-28-37V
surface: black anodized E6/C35

material: EN AW 6063 / T66; A2-70
weight: 0,048 kg/Stk
packaging: 50 pcs. per box / 4.950 pcs. per pallette



artikel-nr: 23075
product-nr: 802391-28-37V P1

Middle clamp for fast mounting 28-37 black with Pin
L= 50 mm
Incl. Opening-function
for Frame height 28-37mm
for Mounting profiles with threaded plate channel M8

drawing number: 802391-28-37V P1
surface: black anodized E6/C35

material: EN AW 6063 / T66; A2-70
weight: 0,048 kg/Stk
packaging: 50 pcs. per box / 4.950 pcs. per pallette



artikel-nr: 23076
product-nr: 802391-38-47V

Middle clamp for fast mounting 38-47 black
L= 50 mm
Incl. Opening-function
for Frame height 38-47mm
for Mounting profiles with threaded plate channel M8

drawing number: 802391-38-47V
surface: black anodized E6/C35

material: EN AW 6063 / T66; A2-70
weight: 0,054 kg/Stk
packaging: 50 pcs. per box / 4.950 pcs. per pallette



artikel-nr: 23077
product-nr: 802391-38-47V P1

Middle clamp for fast mounting 38-47 black with Pin
L= 50 mm
Incl. Opening-function
for Frame height 38-47mm
for Mounting profiles with threaded plate channel M8

drawing number: 802391-38-47V P1
surface: black anodized E6/C35

material: EN AW 6063 / T66; A2-70
weight: 0,054 kg/Stk
packaging: 50 pcs. per box / 4.950 pcs. per pallette





clamps

artikel-nr: 23078
product-nr: 802391-48-50V

Middle clamp for fast mounting 48-50 black
L= 50 mm
Incl. Opening-function
for Frame height 48-50mm
for Mounting profiles with threaded plate channel M8

drawing number: 802391-48-50V
surface: black anodized E6/C35

material: EN AW 6063 / T66; A2-70
weight: 0,058 kg/Stk
packaging: 50 pcs. per box / 4.950 pcs. per pallette



artikel-nr: 23079
product-nr: 802391-48-50V P1

Middle clamp for fast mounting 48-50 black with Pin
L= 50 mm
Incl. Opening-function
for Frame height 48-50mm
for Mounting profiles with threaded plate channel M8

drawing number: 802391-48-50V P1
surface: black anodized E6/C35

material: EN AW 6063 / T66; A2-70
weight: 0,058 kg/Stk
packaging: 50 pcs. per box / 4.950 pcs. per pallette



artikel-nr: 23063
product-nr: 802391C 30-45

Middle clamp Click 2.1 30-45 black
L= 50 mm
Incl. Opening-function and clamping element
For Frame sizes 30-45 mm and mounting profiles with threaded plate M8 channel

drawing number: 802391C 30-45
surface: black anodized E6/C35

material: EN AW 6063 / T66; A2-70
weight: 0,061 kg/Stk
packaging: 50 pcs. per box / 4.950 pcs. per pallette



artikel-nr: 23067
product-nr: 802391C 33-50

Middle clamp Click 2.1 33-50 black
L= 50 mm
Incl. Opening-function and clamping element
For Frame sizes 33-50 mm and mounting profiles with threaded plate M8 channel

drawing number: 802391C 33-50
surface: black anodized E6/C35

material: EN AW 6063 / T66; A2-70
weight: 0,063 kg/Stk
packaging: 50 pcs. per box / 4.950 pcs. per pallette





clamps

artikel-nr: 23062
product-nr: 802391C P1 30-45

Middle clamp Click 2.1 30-45 black with Pin
L= 50 mm
Incl. Opening-function and clamping element
For Frame sizes 30-45 mm and mounting profiles with threaded plate M8 channel

drawing number: 802391C P1 30-45
surface: black anodized E6/C35
material: EN AW 6063 / T66; A2-70
weight: 0,061 kg/Stk
packaging: 50 pcs. per box / 4.950 pcs. per pallette



artikel-nr: 23066
product-nr: 802391C P1 33-50

Middle clamp Click 2.1 33-50 black with Pin
L= 50 mm
Incl. Opening-function and clamping element
For Frame sizes 33-50 mm and mounting profiles with threaded plate M8 channel

drawing number: 802391C P1 33-50
surface: black anodized E6/C35
material: EN AW 6063 / T66; A2-70
weight: 0,063 kg/Stk
packaging: 50 pcs. per box / 4.950 pcs. per pallette



roof hooks

artikel-nr: 15560
product-nr: 800423

Roof hook Schiefer
Stem: 30x5
for pitched roof with slate roofing or asphalt shingles
The roof hook is to integrate on site according to the roofing in the directive covering (without sealing material)

drawing number: 800423 A
material: stainless steel 1.4301
weight: 0,391 kg/Stk
packaging: 1.500 pcs. per pallette



artikel-nr: 15441
product-nr: 800425

Roof hook Biberschwanz
Stem: 30x5
To be used with metal tile (800666)

drawing number: 800425 A
material: stainless steel 1.4301
weight: 0,520 kg/Stk
packaging: 1.000 pcs. per pallette





roof hooks

artikel-nr: 16708
product-nr: 800666

Metal plain tile
Zn-Mg coated
to be mounted with Beavertail roof hook (800425)

drawing number: 800666
material: high-strength steel sheet
weight: 0,500 kg/Stk
packaging: 30 pcs. per box / 240 pcs. per pallette



artikel-nr: 17358
product-nr: 802406

Roof hook 40x10 for fast mounting
Plate: 157x80x5; Stem: 40x10

drawing number: 802406 B
material: Stainless Steel 1.4316; EN AW 6063 / T66
weight: 1,647 kg/Stk
packaging: 10 pcs. per box / 240 pcs. per pallette



artikel-nr: 22320
product-nr: 802412

Roof hook AL12
Plate: 115x100 mm
M8-slot pre-mounted with hammer-head bolt M8x25 (incl. Precote 10-1) and hexagon nut M8 for universal connectivity with mounting-profiles
2x adjustable

drawing number: 802412 A
material: EN AW 6005 / T6; A2-70
weight: 0,643 kg/Stk
packaging: 20 pcs. per box / 320 pcs. per pallette



artikel-nr: 17558
product-nr: 802413

Roof hook AL13
Plate: 115x100 mm
for Mounting profile 37/45
3x adjustable

drawing number: 802413 A
material: EN AW 6005 / T6; A2-70
weight: 0,705 kg/Stk
packaging: 20 pcs. per box / 320 pcs. per pallette





roof hooks

artikel-nr: 21961
product-nr: 802414

Roof hook AL13 X
Plate: 115x100 mm
Pre-assembled to mount profil 37/45 parallel to the rafter
3x adjustable
top connection bracket could be rotated by 90° for standard mounting of profile 37/45 crosswise to the rafter

drawing number: 802414 B
material: EN AW 6005 / T6; A2-70

weight: 0,800 kg/Stk
packaging: 20 pcs. per box / 320 pcs. per pallette



artikel-nr: 18265
product-nr: 802416

Roof hook ALS13
Plate: 115x100 mm
for higher snow loads and for Mounting profile 45
3x adjustable

drawing number: 802416 A
material: EN AW 7020 / T6; A2-70

weight: 0,714 kg/Stk
packaging: 20 pcs. per box / 320 pcs. per pallette



artikel-nr: 20836
product-nr: 802418

Roof hook AL UK SLIM
Platte: 115x100mm

drawing number: 802418
material: EN AW 6005 / T66; A2-70
weight: 0,542 kg/Stk
packaging: 20 Stk. pro Karton / 320 Stk. pro Palette



artikel-nr: 22958
product-nr: 802420

Roof hook ALS13 X
Plate: 115x100 mm
Pre-assembled to mount profil 37/45 at higher snow loads parallel to the rafter
3x adjustable
top connection bracket could be rotated by 90° for standard mounting of profile 37/45 crosswise to the rafter

drawing number: 802420 A
material: EN AW 7020 T6; EN AW 6005 T6; A2-70

weight: 0,800 kg/Stk
packaging: 20 pcs. per box / 320 pcs. per pallette



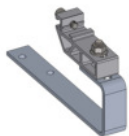


roof hooks

artikel-nr: 21315
product-nr: 802423

Roof hook Schiefer with fast mounting
Stem: 30x5 mm
pre-mounted with fast mounting adapter, for pitched roof with slate roofing
The roof hook is to integrate on site according to the roofing in the directive covering (without sealing material)

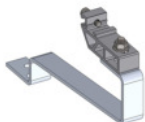
drawing number: 802423 A
material: stainless steel 1.4301, EN AW 6063 / T66
weight: 0,520 kg/Stk
packaging: 20 Stk. / Karton



artikel-nr: 21316
product-nr: 802425

Roof hook Biberschwanz with fast-mounting
Stem: 30x5 mm
fast mounting adapter pre-mounted, to be used with metal tile (800666)

drawing number: 802425 A
material: stainless steel, EN AW 6063 / T66
weight: 0,650 kg/Stk
packaging: 20 pcs.



artikel-nr: 17082
product-nr: 802605

Distance plate 2 mm
100x75x2 mm
To put under Alumero Roof Hooks
Take care on changing of screw lengths

drawing number: 802605 A
material: 1.4016
weight: 0,071 kg/Stk
packaging: *20 pcs. per box / 720 pcs. per pallet



artikel-nr: 17083
product-nr: 802606

Distance plate 3 mm
100x75x3 mm
To put under Alumero Roof hooks
Take care on changing of screw lengths

drawing number: 802606 A
material: 1.4016
weight: 0,107 kg/Stk
packaging: 100 pcs. per box





roof hooks

artikel-nr: 19224
product-nr: 802607

Distance plate 3 mm
60x35x3 mm
To put under Alumero Roof Hooks with swiveable Ground Plate

drawing number: 802607 A
material: 1.4016
weight: 0,009 kg/Stk
packaging: 100 pcs. per box



artikel-nr: 19227
product-nr: 802608

Distance plate 5 mm
60x35x5 mm
To put under Alumero Roof Hooks with swiveable Ground Plate

drawing number: 802608 A
material: 1.4016
weight: 0,011 kg/Stk
packaging: 100 pcs. per box



corrugated roof fastener

artikel-nr: 16906
product-nr: 800462-10

Fast mounting plate 2.1 M10
pre-mounted with fast mounting plate 2.1, which allows a quick and easy connection to mounting profiles 37-45

drawing number: 800462-10 A
material: EN AW 6063 / T66; A2-70
weight: 0,116 kg/Stk
packaging: 20 pcs. per box / 1.540 pcs. per pallette



artikel-nr: 16357
product-nr: 800462-12

Fast mounting plate 2.1 M12
pre-mounted with fast mounting plate 2.1, which allows a quick and easy connection to mounting profiles 37-45

drawing number: 800462-12 A
material: EN AW 6063 / T66; A2-70
weight: 0,116 kg/Stk
packaging: 20 pcs. per box / 1.540 pcs. per pallette





corrugated roof fastener

artikel-nr: 18058
product-nr: 800464

Solar fastener
BZ-8,0x80/70 FZD
for steel substructures with captive sealing washer for corrugated fiber cement slabs
without mounting plate

drawing number: 800464 A
material: stainless steel V2A, EPDM

weight: 9,700 kg/100 Stk.
packaging: 50 pcs. per box



artikel-nr: 18059
product-nr: 800465

Solar fastener
BZ-8,0x100/70 FZD
for steel substructures with captive sealing washer for corrugated fiber cement slabs
without mounting plate

drawing number: 800465 A
material: stainless steel V2A, EPDM

weight: 10,400 kg/100 Stk.
packaging: 50 pcs. per box



artikel-nr: 22752
product-nr: 800470

Solar fastener
BZ-8,0x150/70 FZD
for steel substructures with captive sealing washer for corrugated fiber cement slabs
without mounting plate

drawing number: 800470 A
material: stainless steel V2A, EPDM

weight:
packaging: 50 pcs. per box



artikel-nr: 16424
product-nr: 802403

Hanger bolt M10x200 for fast mounting
M10x200
pre-assembled with 3 locking nuts and seal
with fast mounting plate 2.1, which allows a quick and easy connection to mounting profiles 37-45

Note: Minimum thread 60 mm!

drawing number: 802403 A
material: A2-70; EN AW 6063 / T66; EPDM

weight: 22,800 kg/100 Stk.
packaging: 20 per box / 1.000 pcs. per pallette





corrugated roof fastener

artikel-nr: 16425
product-nr: 802404

Hanger bolt M12x300 for fast mounting
M12x300
pre-assembled with 3 locking nuts and seal
with fast mounting plate 2.1, which allows a quick and easy connection to mounting profiles 37-45

Note: Minimum thread 80 mm!

drawing number: 802404 A
material: A2-70; EN AW 6063 / T66; EPDM

weight: 35,400 kg/100 Stk.
packaging: 20 pcs. per box / 1.000 pcs. per pallette



artikel-nr: 16599
product-nr: 802405

Hanger bolt M12x200 for fast mounting
M12x200
pre-assembled with 3 locking nuts and seal
with fast mounting plate 2.1, which allows a quick and easy connection to mounting profiles 37-45

Note: Minimum thread 80 mm!

drawing number: 802405 A
material: A2-70; EN AW 6063 / T66; EPDM

weight: 28,300 kg/100 Stk.
packaging: 20 pcs. per box / 1.000 pcs. per pallette



artikel-nr: 18008
product-nr: 802408

Hanger bolt M10x250 for fast mounting
M10x250
pre-assembled with 3 locking nuts and seal
with fast mounting plate 2.1, which allows a quick and easy connection to mounting profiles 37-45

Note: Minimum thread 60 mm!

drawing number: 802408 A
material: A2-70; EN AW 6063 / T66; EPDM

weight: 26,800 kg/100 Stk.
packaging: 20 pcs. per box / 1.000 pcs. per pallette



artikel-nr: 18009
product-nr: 802409

Hanger bolt M10x300 for fast mounting
M10x300
pre-assembled with 3 locking nuts and seal
with fast mounting plate 2.1, which allows a quick and easy connection to mounting profiles 37-45

Note: Minimum thread 60 mm!

drawing number: 802409 A
material: A2-70; EN AW 6063 / T66; EPDM

weight: 30,800 kg/100 Stk.
packaging: 20 pcs. per box / 1.000 pcs. per pallette





corrugated roof fastener

artikel-nr: 18010
product-nr: 802410

Hanger bolt M12x250 for fast mounting
M12x250
pre-assembled with 3 locking nuts and seal
with fast mounting plate 2.1, which allows a quick and easy connection to mounting profiles 37-45

Note: Minimum thread 80 mm!

drawing number: 802410 A
material: A2-70; EN AW 6063 / T66; EPDM

weight: 35,000 kg/100 Stk.
packaging: 20 pcs. per box / 1.000 pcs. per pallette



artikel-nr: 23711
product-nr: 802458

Solar fastener 2.1 8,0x 80/70
8,0x80/70 FZD
pre-assembled with 3 locking nuts and seal.
With fast mounting plate 2.1, which allows a quick and easy connection to mounting profile 37-45

Note: Usable only for steel substructure!

drawing number: 802458
material: stainless steel V2A; EN AW 6063 / T66; EPDM

weight: 0,178 kg/100 Stk.
packaging: 20 Stk. pro Karton; 1.000 Stk. pro Palette



artikel-nr: 23714
product-nr: 802459

Solar fastener 2.1 8,0x 100/70
8,0x100/70 FZD
pre-assembled with 3 locking nuts and seal.
With fast mounting plate 2.1, which allows a quick and easy connection to mounting profile 37-45

Note: Usable only for steel substructure!

drawing number: 802459
material: stainless steel V2A; EN AW 6063 / T66; EPDM

weight: 18,400 kg/100 Stk.
packaging: 20 Stk. pro Karton; 1.000 Stk. pro Palette



artikel-nr: 17478
product-nr: 802499

Hanger bolt / Solar fastener
Further dimensions, models and caps on request

drawing number: 802499
material: A2-70; EN AW 6063 / T66; EPDM
weight: kg/100 Stk.
packaging:



metal sheet fastener

artikel-nr: 18062
product-nr: 800467

Clamp Zambelli 500
Typ 2

drawing number: 800467 Index a
material: Stainless steel 1.4301
weight: 0,188 kg/Stk
packaging: 50 pcs. per box



artikel-nr: 18099
product-nr: 800468

Hanger bolt set incl. twin mounting plate
2x M12x300
pre-assembled with 3 locking nuts and seal
with mounting plate for fiber cement - shaft distance 177 mm
Note: Minimum thread 80 mm!

drawing number: 800468
material: A2-70; EN AW 6063 / T66; EPDM

weight: 0,800 kg/Stk
packaging: 10 pcs. per box / 640 pcs. per pallette

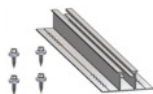


artikel-nr: 17101
product-nr: 802440

Trapezoidal bridge 2.1
L=400mm
Incl. EPDM rubber and incl. 4 pcs. self drillings screws with sealing washer
For sick distances from 100 - 333 mm , place of Origin: Poland

drawing number: 802440 D
surface: mill finish

material: EN AW 6063 / T66; A2-70; EPDM
weight: 0,269 kg/Stk
packaging: 25 pcs. per box / 800 pcs. per pallette

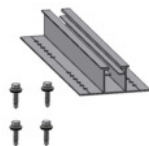


artikel-nr: 21247
product-nr: 802441

Trapezoidal bridge 2.1 S
L= 250 mm
Incl. EPDM rubber and incl. 4 pcs. self drillings screws with sealing washer
For sick distances from 100 - 207 mm ; Place of Origin: Poland

drawing number: 802441 B
material: EN AW 6063 / T66; A2-70; EPDM

weight: 0,180 kg/Stk
packaging: 25 pcs. per box / 800 pcs. per pallette





metal sheet fastener

artikel-nr: 21278
product-nr: 802442

Trapezoidal short rail 2.1 T
L = 100mm
Incl. premounted EPDM rubber and incl. 2 pcs. roof mountig screws EJOT JF3-2-5,5x25-E11 (800658-1)

drawing number: 802442 B
material: EN AW 6063 / T66; A2-70; EPDM
weight: 0,050 kg/Stk
packaging: 100 pcs. per box / 6.000 pcs. per pallette



artikel-nr: 22736
product-nr: 802443

Trapezoidal short rail 2.1 T
L = 150mm
Incl. premounted EPDM rubber and incl. 2 pcs. roof mountig screws EJOT JF3-2-5,5x25-E11 (800658-1)

drawing number: 802443 A
material: EN AW 6063 / T66; A2-70; EPDM
weight: 0,078 kg/Stk
packaging: 100 pcs. per box / 6.000 pcs. per pallette



artikel-nr: 23866
product-nr: 802444

Trapezoidal short rail 2.1 Click
L = 150mm
Fixation of framed PV-modules is possible only with Alumero Click 2.1-Clamps!
Incl. premounted EPDM rubber and incl. 2 pcs. roof mountig screws EJOT JF3-2-5,5x25-E11 (800658-1)

drawing number: 802444 A
surface: pressblank
material: EN AW 6063 / T66; A2-70; EPDM
weight: 0,091 kg/Stk
packaging: 100 Stk. pro Karton / 6.000 Stk. pro Palette



artikel-nr: 17102
product-nr: 802445

Trapezoidal sheet bridge Plus
L=400mm
Incl. EPDM rubber and incl. 4 pcs. self drillings screws with sealing washer
For sick distances from 100 - 333 mm

drawing number: 802445 D
material: EN AW 6063 / T66; A2-70; EPDM
weight: 0,359 kg/Stk
packaging: 25 pcs. per box / 800 pcs. per pallette





metal sheet fastener

artikel-nr: 17103
product-nr: 802446

Front part Plus
L=100mm
for mounting in combination with 800445

drawing number: 802446 A
material: EN AW 6063 / T66
weight: 0,082 kg/Stk
packaging: 10 pcs. per box / 990 pcs. per pallette



artikel-nr: 17104
product-nr: 802447

Back part Plus
L=100mm
for mounting in combination with 800445

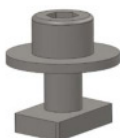
drawing number: 802447 A
material: EN AW 6063 / T66
weight: 0,152 kg/Stk
packaging: 10 pcs. per box / 480 pcs. per pallette



artikel-nr: 17105
product-nr: 802448

Securing Set Plus
for trapezoidal elevation system Plus
Consisting of a threaded plate, hex bolt and washer

drawing number: 802448 A
material: A2-70
weight: 0,025 kg/Stk
packaging: 250 Stk. im Karton



artikel-nr: 17919
product-nr: 802449

Trapezoidal bridge Plus S
L=400mm
Incl. EPDM rubber
For sick distances from 100 - 333 mm
4 pcs. Screws need to be ordered separately depending on the thickness of the sandwich element.

drawing number: 802449 A
material: EN AW 6063 / T66; EPDM
weight: 0,359 kg/Stk
packaging: *25 pcs. per box / 800 pcs. per pallette





metal sheet fastener

artikel-nr: 23181
product-nr: 802460

Kalzip clamp 2.1 TPF
pre-mounted with fast mounting plate 2.1, which allows a quick and easy connection to mounting profiles 37-45

drawing number: 802460 A
surface: mill finish
material: EN AW 6063 / T66; A2-70
weight: 0,268 kg/Stk
packaging: 50 pcs. per box / 450 pcs. per pallet



artikel-nr: 23187
product-nr: 802461

Kalzip clamp 2.1 TPK
pre-assembled with trapezoidal sheet short rail, which allows a quick, direct and horizontal modul

drawing number: 802461 A
surface: mill finish
material: EN AW 6063 / T66; A2-70
weight: 0,156 kg/Stk
packaging: 50 pcs. per box / 600 pcs. per pallet



artikel-nr: 23188
product-nr: 802462

Angled standing seam clamp 2.1 TPF
fast mounting with mounting plate 2.1, which allows a quick and easy connection to mounting profiles 37-65

drawing number: 802462 B
surface: mill finish
material: EN AW 6063 / T66; A2-70
weight: 0,221 kg/Stk
packaging: 50 Stk. pro Karton / 1.200 Stk. pro Palette



artikel-nr: 23189
product-nr: 802463

Angled standing seam clamp 2.1 TBK
pre-assembled with trapezoidal sheet short rail, which allows a quick, direct and horizontal modul

drawing number: 802463 B
surface: mill finished
material: EN AW 6063 / T66; A2-70
weight: 0,162 kg/Stk
packaging: 50 Stk. im Karton / 1.800 Stk. pro Palette





metal sheet fastener

artikel-nr: 23250
product-nr: 802466

Double seam clamp 2.1 TPF
fast mounting with mounting plate 2.1, which allows a quick and easy connection to mounting profile 37-45

drawing number: 802466 A
surface: mill finish
material: EN AW 6063 / T66; A2-70
weight: 0,146 kg/Stk
packaging:



artikel-nr: 23251
product-nr: 802467

double seam clamp 2.1 TBK
pre-assembled with trapezoidal sheet short rail, which allows a quick, direct and horizontal modul

drawing number: 802467 A
surface: mill finish
material: EN AW 6063 / T66; A2-70
weight: 0,100 kg/Stk
packaging: 50 Stk. im Karton / 1.800 Stk. pro Palette



standard parts/accessories

artikel-nr: 15726
product-nr: 800610

Socket screw
M8x20
With hexagon socket and serration under head
SW6

drawing number: 800610 DIN912
material: A2-70
weight: 1,310 kg/100 Stk.
packaging: 100 pcs.



artikel-nr: 15729
product-nr: 800613

Socket screw
M8x35
With hexagon socket and serration under head
SW6

drawing number: 800613 DIN 912
material: A2-70
weight: 1,800 kg/100 Stk.
packaging: 100 pcs.





standard parts/accessories

artikel-nr: 16908
product-nr: 800627

Hexagon screw
M10x45
Threaded up to the head
SW17

drawing number: 800627 DIN 933
material: A2-70

weight: 2,000 kg/100 Stk.
packaging: 100 pcs.



artikel-nr: 15052
product-nr: 800634

Hexagon nut
M10
with flange and serration

drawing number: 800634 DIN 6923
material: A2-70

weight: 1,120 kg/100 Stk.
packaging: 100 pcs.



artikel-nr: 14927
product-nr: 800637

Threaded plate type 28x15
M8

drawing number: 800637
surface: with Precote 10-1 coating
material: Stainless steel V2A
weight: 0,700 kg/100 Stk.
packaging: 100 pcs.



artikel-nr: 15453
product-nr: 800646

Hammerhead screw
M10x25

drawing number: 800646
material: A2-70
weight: 1,990 kg/100 Stk.
packaging: 100 pcs.





standard parts/accessories

artikel-nr: 16895
product-nr: 800667

Flat head screw
8,0x140
TX40

drawing number: 800667
surface: glide coating
material: A2-70
weight: 2,800 kg/100 Stk.
packaging: 100 pcs.



artikel-nr: 16896
product-nr: 800668

Flat head screw
8,0x160
TX40

drawing number: 800668
surface: glide coating
material: A2-70
weight: 2,900 kg/100 Stk.
packaging: 100 pcs.



artikel-nr: 16897
product-nr: 800669

Flat head screw
8,0x200
TX40

drawing number: 800669
surface: glide coating
material: A2-70
weight: 3,200 kg/100 Stk.
packaging: 100 pcs.



artikel-nr: 16900
product-nr: 800670

Flat head screw
8,0x180
TX40

drawing number: 800670
surface: glide coating
material: A2-70
weight: 3,000 kg/100 Stk.
packaging: 100 pcs.





standard parts/accessories

artikel-nr: 15820
product-nr: 800706

Cable tie inkl. clip
200x4,8 mm
To clip on trapezoidal bridge
Cable ties 200 x 4.6 mm; Place of Origin: Germany

drawing number: 800706
material: PA 66, UV resistant
weight: 0,300 kg/100 Stk.
packaging: 100 pcs. per bag / 4.000 pcs. per box



artikel-nr: 16596
product-nr: 802601

Shutter for Mounting profile 37/45
For mounting profile 45 (802100)
For mounting profile 37 (802105)

drawing number: 802601 MT0030246#1
material: PVC black
weight: 0,007 kg/Stk
packaging: 2.500 pcs. per box



artikel-nr: 16709
product-nr: 802602

Round wire
8 mm
For Grounding

drawing number: 802602 A
material: EN AW 6101 semi-hard
weight: 0,136 kg/mtr
packaging: *In Coils a 20 kg (ca. 148 mtr)



artikel-nr: 16710
product-nr: 802603

Wire clamp 8-10
To fix round wire with 8-10 mm on Mounting profiles with Mounting channel for hammer head screws M8

drawing number: 802603 A
material: VA; A2-70
weight: 0,072 kg/Stk
packaging: 30 pcs. per box / 8.820 pcs.per pallette





standard parts/accessories

artikel-nr: 16766
product-nr: 802604

Cable tie inkl. clip
200x4,8 mm
Clips for Mounting channel M8 and M10
cable tie 200 x 4,8

drawing number: 802604 A
material: PA 66 UV resistant
weight: 0,200 kg/100 Stk.
packaging: 100 pcs. per box / 2.500 pcs. per pallette



special parts

artikel-nr: 19161
product-nr: 800301P

Earthing plate for Middle clamp
L=66mm B=35mm
to implement the Modules in the grounding
For Middle clamps with L= 50 mm and W= 20 mm

drawing number: 800301P B
material: stainless steel 1.4301
weight: 0,300 kg/100 Stk.
packaging: 100 pcs. per box / 4.200 pcs. per pallette



Various Solar Articles

artikel-nr: 20862
product-nr:

Sample case AS2.1
Exclusive sample-case for presentation or training purposes

drawing number:
material: Contains all articles of the AS2.1 mounting system
weight: 10,000 kg/Stk
packaging:





WWW.MOUNTING-SOLUTIONS.COM

MOUNTING SOLUTIONS PV SYSTEMS GMBH
Gewerbestraße 1 | A-6710 Nenzing - Austria

T +43 5524 539 44 | office@mounting-solutions.com

STAND OKTOBER 2020